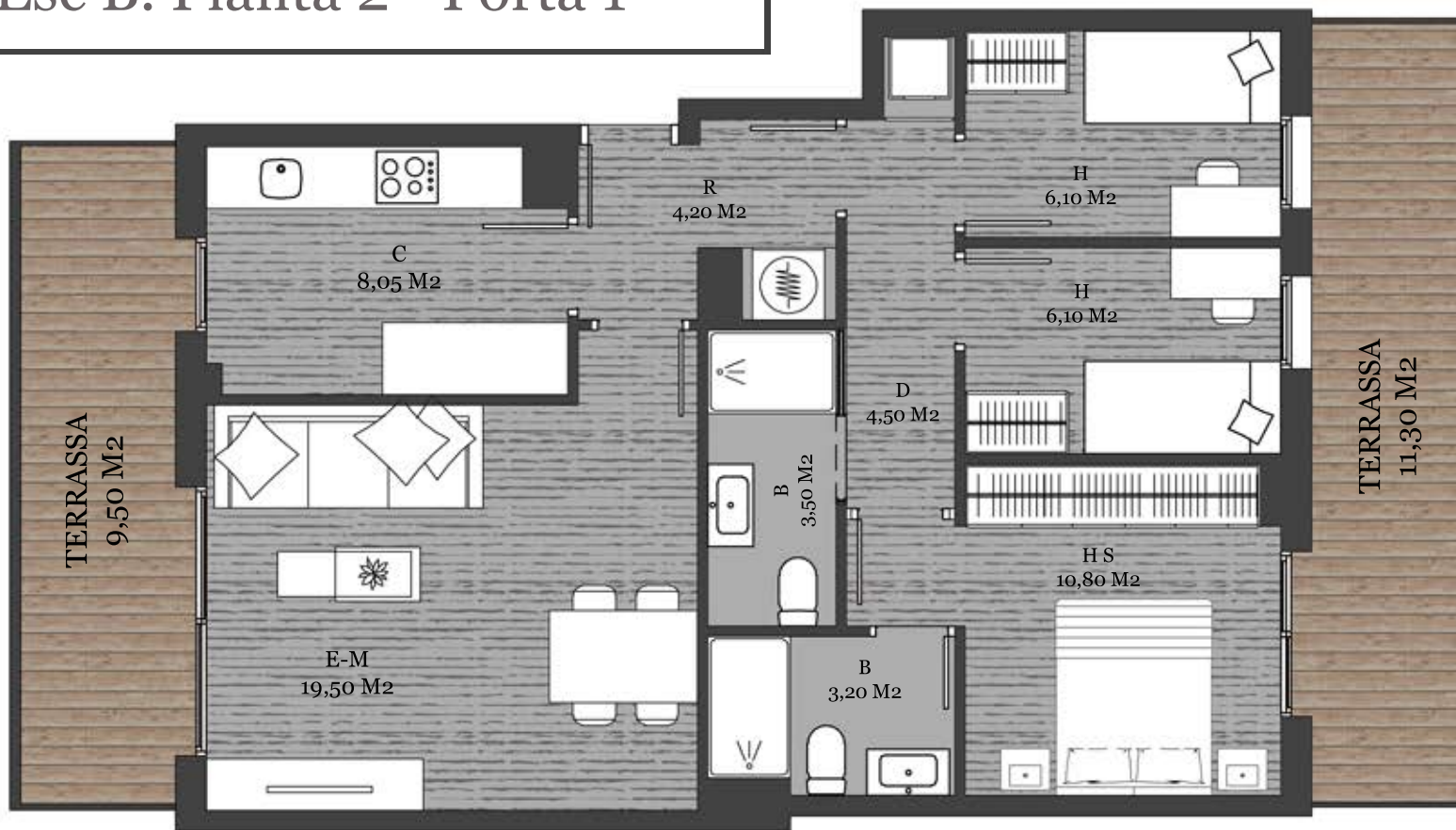




Esc B. Planta 2 - Porta 1



PROMOCIÓ FRANCESC MACIÀ

SUP. CONSTRUÏDA	77,48 M2		
50% SUP. BALCÓ	4,75 M2		
50% SUP. BALCÓ	5,65 M2		
TOTAL SUP. CONSTRUÏDA	87,88 M2		

